
villa Noailles, Hyères
communauté d'agglomération Toulon
Provence Méditerranée
Montée Noailles 83400 Hyères
contact@villanoailles-hyeres.com
T / +33 (0)4 98 08 01 98/95

Festival information
T / +33 (0)4 98 08 01 98/95
hyeres2014@villanoailles-hyeres.com

**COMPETITIONS
CONFERENCES
EXHIBITIONS
CONCERTS**

HighRes. press pictures are available
for download.
(password on request from the press office)

Press villa Noailles
Philippe Boulet
boulet@tgcdn.com
T / +33 (0)6 82 28 00 47

Press Festival
2^e BUREAU - Sylvie Grumbach
hyeres@2e-bureau.com
T / +33 (0)1 42 33 93 18

International textile and fashion conferences
Registration -
T / +33 (0)1 42 66 64 44
hyeres2014@modeaparis.com
Press - Jimmy Pihet :
T / +33 (0)1 42 66 64 44
jimmy.pihet@modeaparis.com
www.villanoailles-hyeres.com/hyeres2014

FASHION COMPETITION

LISELORE FROWIJN

Netherlands, Womenswear collection

PABLO HENRARD

Belgium, Menswear collection

MARIT ILISON

Estonia, Womenswear collection

ANNE KLUYTENAAR

Netherlands, Menswear collection

CORALIE MARABELLE

France, Womenswear collection

KENTA MATSUSHIGE

Japan, Womenswear collection

AGNESE NARNICKA

Latvia, Menswear collection

LOUIS-GABRIEL NOUCHI

France, Womenswear collection

ROSHI PORKAR

Austria, Womenswear collection

YULIA YEFIMTCHUCK

Ukraine, Womenswear collection

Fashion curatorship

JEAN-PIERRE BLANC

MAGALIE GUÉRIN

General art direction, settings and scenography of the fashion shows

MAIDA GRÉGORY-BOINA

FASHION JURY

CAROL LIM & HUMBERTO LEON

Creative directors of KENZO, presidents of the jury, Paris

PAMELA GOLBIN

General curator, Fashion and Textile, Les Arts Décoratifs, Paris

SPIKE JONZE

Film director, Los Angeles

JAY MASSACRET

Fashion Director, V Magazine and V Man, New York

JAIME PERLMAN

Creative director, British Vogue, London

CHLOË SEVIGNY

Actress, New York

CAROL SONG

Head buyer at Opening Ceremony, New York

ÉRIC WILSON

Fashion news director, american InStyle, New York

GRAND PRIX OF THE JURY PREMIERE VISION



KENTA MATSUSHIGE

Hinabi

Japan, Womenswear collection

The Grand Prix of the Jury Premiere Vision went to Kenta Matsushige

«It was a very tough decision for all the jurors because every designer represented so many different aspects of values we admire for this prize. Kenta represents a designer that embodies longevity, a dedication to details, a coherent expression, and a sense of modernity we all felt deserving of the Grand Prix award.»

The members of the jury

The prize consists of :

- a grant of 15 000 euros offered by PREMIERE VISION and a high level of visibility at both Première Vision New-York and Première Vision Paris shows
- a collaborative project with some of CHANEL's Métiers d'art, up to 15 000 euros
- a collaboration with PETIT BATEAU on one or more of its products which are emblematic

As at each edition, Première Vision once again welcomed the 10 finalists last February. These young designers were able to meet the exhibitors and manufacturers of the Première Vision show. Depending on their projects, they were able to choose their yarns, fabrics or accessories. They were also accompanied during the making of their collection.

CHLOÉ PRIZE



ROSHI PORKAR

Austria, Womenswear collection



LISELORE FROWIJN

Afternoon of a Replicant

Netherlands, Womenswear collection

The Chloe Prize went ex aequo to Roshi Porkar and Liselore Frowijn.
The prize was given along with a grant of 15 000 euros for each designers in order to support their creations.

SPECIAL DISTINCTION OF THE JURY OPENING CEREMONY DOTATION



YULIA YEFIMTCHUCK

Ukraine, Collection Femme

« We are very excited to give a Special Distinction of the jury to Yulia Yefimtchuck because we feel that she proposes a strong point of view, a purity, and a sense of strength. She will be carried at Opening Ceremony for 2 seasons. »
Carol Lim and Humberto Leon

PUBLIC PRIZE / CITY OF HYERES



CORALIE MARABELLE

Dream catcher

France, Womenswear collection

The Public Prize / City of Hyeres went to Coralie Marabelle

DOTATIONS

Mercedes-Benz will invite one of the designers to showcase his or her collection in Berlin during the Mercedes-Benz Fashion Week Berlin, in collaboration with the German edition of ELLE magazine.

- www.mercedes-benz.com/fashion

The Galeries Lafayette Group will offer a visibility to the award winning creations throughout the network of the Galeries Lafayette.

- www.galerieslafayette.com

The **Camper** shoe brand will offer to Louis-Gabriel Nouchi a ten days long workshop in Majorca at the Camper foundation.

- www.camper.com

Eyes on Talents invites all finalists of each category to have their page with profile and online portfolio on Eyes on Talents. Festival of Hyeres Winners will benefit in addition with special communication towards Eyes on Talents member brands.

- www.eyesontalents.com

Puntoseta offers to all awarded designers an original printed fabric.

- www.puntoseta.com

Catwalk Pictures offers to Kenta Matsushige the pictures of its next fashion show during Paris fashion week.

- www.catwalkpictures.com

All of the selected candidates have benefit from the support of the Festival's partners : original printed fabrics will be on offer by Puntoseta, crystals from the SWAROVSKI, Merino wool from The Woolmark Company.

Givaudan created a perfume for each of the ten competing designer.

PHOTO COMPETITION

ANNA GRZELEWSKA

Poland

OSMA HARVILAHTI

Finland

ARNAUD LAJEUNIE

France

ORIANNE LOPES

France

BIRTHE PIONTEK

Germany | Canada

VIRGINIE REBETEZ

Switzerland

MARIE RIME

Switzerland

MARLEEN SLEEUWITS

Netherlands

CHARLOTTE TANGUY

France

LORENZO VITTURI

Italy | United Kingdom

PHOTOGRAPHY JURY

STEVE HIETT

President of the jury, photographer, Paris

MANISH ARORA

Fashion designer, New-Dehli | Paris

STACEY BAKER

Associate photo editor, The New York Times Magazine, New york

MICHEL GAUBERT

Sound designer, Paris

CLARE VANDER MEERSCH

Founding member of Magenta Foundation, Toronto

MUTSUKO OTA

Editorial director, IMA magazine, Tokyo

DAMIEN POULAIN

Critic director and publisher, Oodee, London

CATHY RÉMY

Deputy photography director, Le Monde M, Paris

BRETT ROGERS

Director, The photographers' Gallery, London

OLIVER SIEBER

Photographer, Düsseldorf

ANDREAS WELLNITZ

Visual editor and magazine consulting, Berlin

Photography curatorship

RAPHAËLLE STOPIN

THE PHOTOGRAPHY GRAND PRIX OF THE JURY

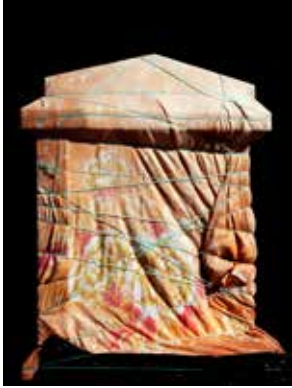


LORENZO VITTURI
Italy | United Kingdom

The Photography Grand Prix of the jury went to Lorenzo Vitturi.

CHANEL offers to the prize-winner a grant of 15 000 euros.
- www.chanel.com

**SPECIAL DISTINCTION OF THE JURY
DOTATION LEICA**



VIRGINIE REBETEZ
Switzerland

LEICA awards Virginie Rebetez with a Leica S2 camera and a Summarit-S lens.
- www.leica-camera.com

DOTATION SCHOOL OF VISUAL ARTS



ORIANNE LOPES
France

The SCHOOL OF VISUAL ARTS in New-York, in association with the Photography Jury 2014, grants Orianne Lopes a Photo Global scholarship.
- www.sva.edu

PHOTOGRAPHY PUBLIC PRIZE / CITY OF HYERES



MARIE RIME
Switzerland

The Photography Public Prize / City of Hyères went to Marie Rime.

EYES ON TALENTS

Eyes on Talents invites all finalists of each category to have their page with profile and online portfolio on Eyes on Talents. Festival of Hyeres winners will benefit in addition with special communication towards Eyes on Talents member brands.

The festival and the villa Noailles thank

Partenaires institutionnels



Grand partenaire

CHANEL

Partenaires principaux



PREMIÈRE **VISION**

Chloé



Mercedes-Benz

DEFI
LA MODE DE FRANCE



Partenaires à l'année



Groupe
Lafayette

La Fayette

FONDATION
D'ENTREPRISE
RICARD

Partenaires du festival



NINA RICCI

Givaudan

SWAROVSKI

L'ORÉAL
PROFESSIONNEL
PARIS

VILBREQUIN



SVA NYC

eyes on talents



JANVIER
Digital Lab

PALAIS DE TOKYO



EYESIGHT
Fashion & Luxury Events

STAGE OF THE ART



FLEURS DU VAR
HORTISUD
CULTURE & DÉVELOPPEMENT

AIRFRANCE **KLM**
PARTENAIRES OFFICIELS OFFICIAL PARTNERS



FONDATION **CARMIGNAC**

Le **MARAIS**

Les Docks
Cité de la Mode
et du Design

TOLIX

The Woolmark symbol is a registered trade mark of The Woolmark Company. In UK, Eire, Hong Kong and India the Woolmark Company symbol is a certification trade mark.

Partenaires média

VOGUE **FR**

THE
STIMULEYE

CATWALK **PROPOSES**

VERY

MODEMONLINE

OBSSESSION

NOWNESS

fisheye
LA PHOTOGRAPHIE DE LA FASHION

Aesthetica

arte



